

WoodPro™

Wood Veneer Metal Vision Frame

Patent Pending



Red Oak



Maple



Mahogany



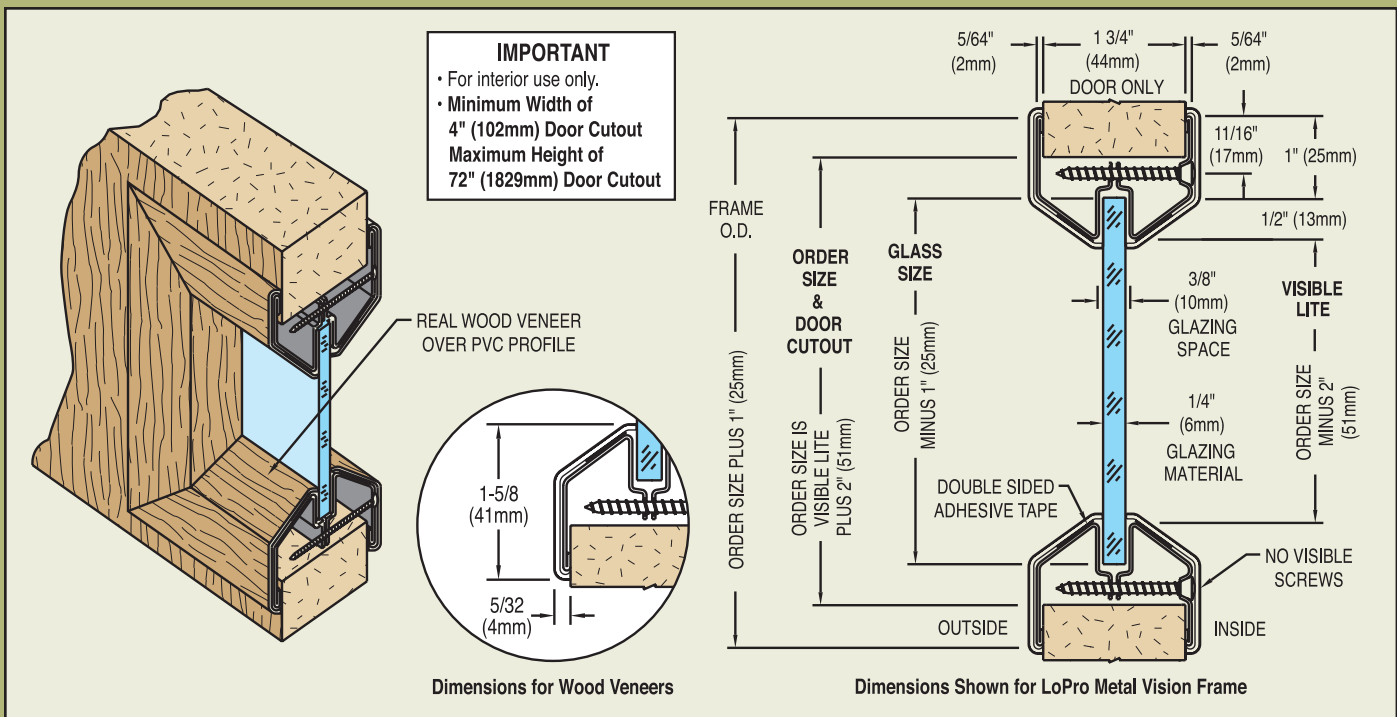
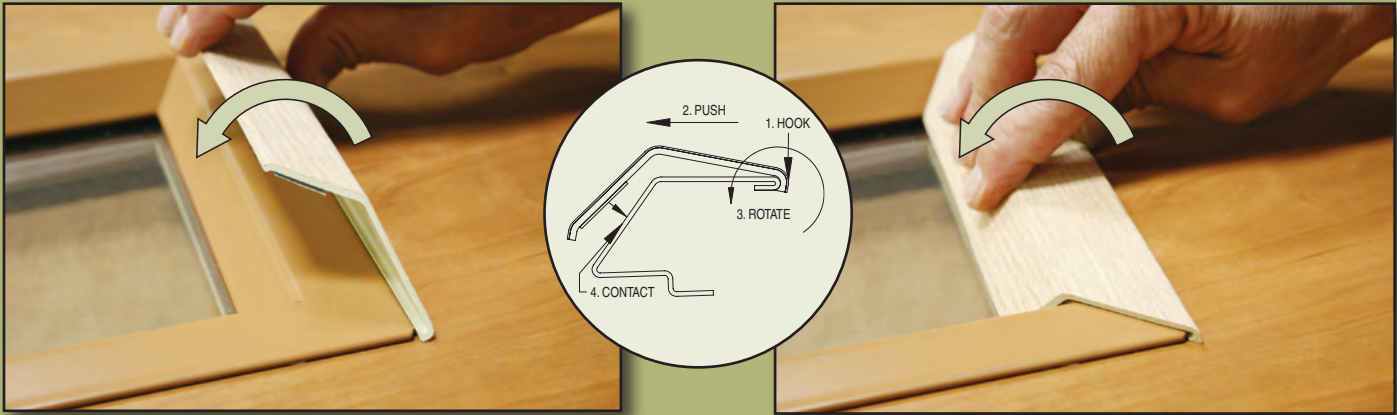
Anemostat
Door Products

4958 Stout Dr. #119 • San Antonio, TX 78219
210.662.6300 • Fax 210.662.2828 • E-mail door@anemostat.com

REAL WOOD VENEER

Over LoPro Metal Vision Frame

WoodPro™



Material and Finish

- Unfinished Wood Veneer over PVC fastens to Metal LoPro Vision Frame with Double Sided Adhesive Tape.
- Red Oak • Maple
- Mahogany

Size Range

- 4" to 36" w x 4" to 72" h (102-914mm x 102-1829mm)
- For 1-3/4" (44mm) Door and 3/16" (5mm) or 1/4" (6mm) Glazing
- Not Available in Fractional Sizes

Fire Rated

- UL Tested and Listed 20/45/60/90 minute
- BSEN 1634.1:2008 30 minutes in Timber Doors

Aesthetics

- No Visible Screws
- Flush to the Door Look
- Interior Use Only