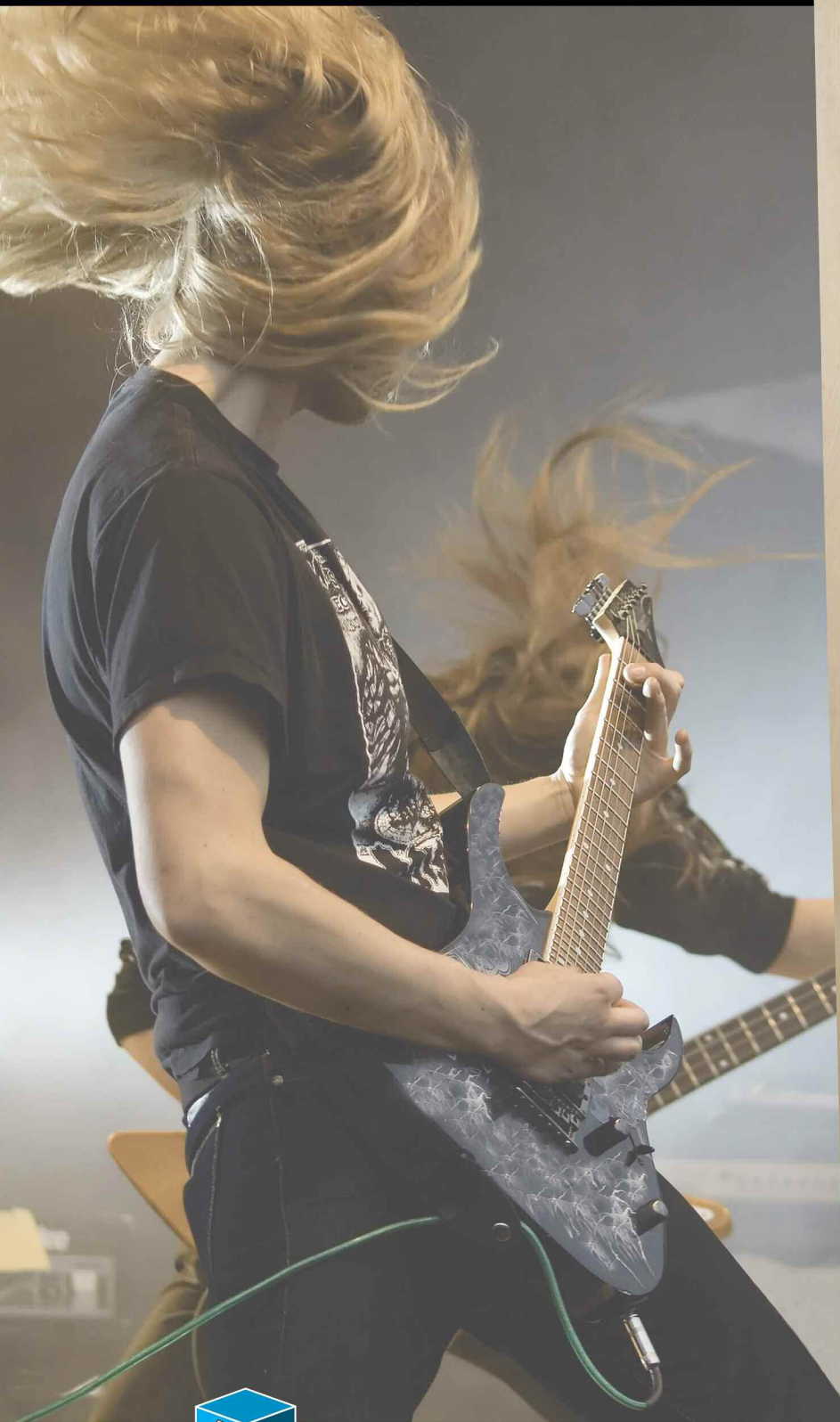


LoPro-TMSTC

Sound Rated Vision Lite
and Glazing Assembly

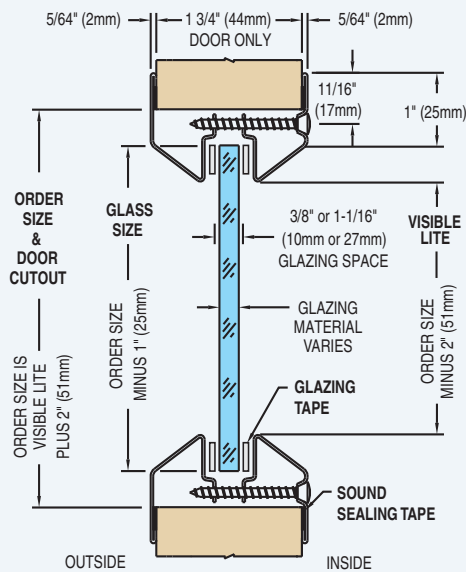
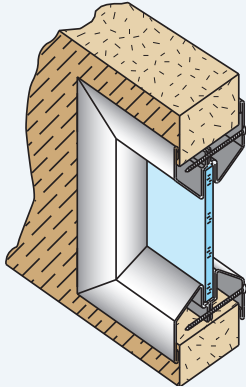


Anemostat
Door Products

4958 Stout Dr. #119 • San Antonio, TX 78219
Tel: 210.662.6300 • Fax: 210.662.2828
E-mail door@anemostat.com • www.anemostat.com

LoPro-STC Assembly

PLEASE NOTE: LoPro-STC must be purchased as a complete assembly (LoPro Vision Panel, Glass and Glazing Tape) in order to conform with STC Testing achieved.



■ For use in Sound Rated Wood or Metal Doors

■ **TESTED in ACCORDANCE WITH:** ASTM E90-09 and ASTM E2235-04. STC measurements determined in accordance with ASTM E413-04.

Testing conducted at:

Western Electro - Acoustic Laboratory
Santa Clarita, CA.

■ **TESTED SIZE:** 24" x 36" (610mm x 914mm)

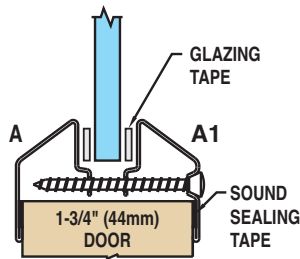
■ **FIRE RATINGS:** See Glazing Product Technical Data Sheets at www.anemostat.com



4958 Stout Dr. #119 • San Antonio, TX 78219
Tel: 210.662.6300 • Fax: 210.662.2828

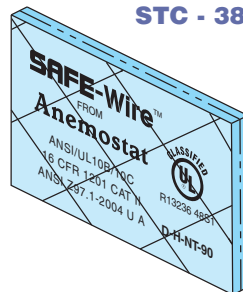
E-mail door@anemostat.com • www.anemostat.com

LoPro AA1



Fire/Safety Rated Glazing

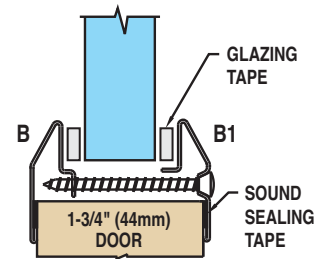
STC - 38



1/4" (6mm) SAFE-Wire

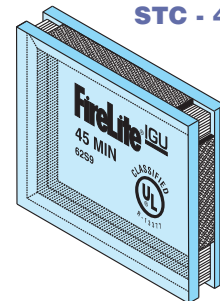
- Fire Rated up to 90 min.
- Category II Safety Rated

LoPro BB1



Fire/Safety Rated Glazing

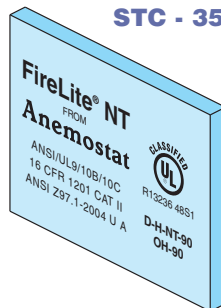
STC - 42



1" (25mm) FireLite Plus IGLU

- Fire Rated up to 180 min.
- Category II Safety Rated

STC - 35



3/16" (5mm) FireLite NT

- Fire Rated up to 180 min.
- Category II Safety Rated

STC - 41



7/8" (23mm) Pyrostop 60-101

- Fire Rated up to 60 min.
- Category II Safety Rated

Safety Rated

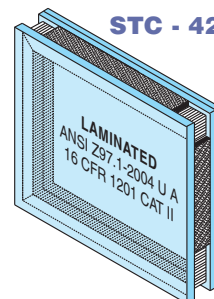
STC - 38



5/16" (8mm) FireLite Plus

- Fire Rated up to 180 min.
- Category II Safety Rated

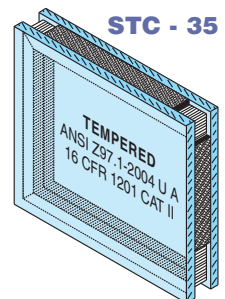
STC - 42



1" (25mm) Laminated IGLU

- Category II Rated
- 5/16" (8mm) Laminated & 3/16" (5mm) Tempered

STC - 35



1" (25mm) Tempered IGLU

- Category II Rated
- 1/4" (6mm) Tempered & 1/4" (6mm) Tempered